



SIKA SOLUTIONS FOR MANUFACTURING FACILITIES

BUILDING TRUST





Sika Solutions for Basements

Sika Solutions for Roofs

Sika Solutions for Floors

Sika Solutions for Concrete

Sika Solutions for Steel Structures

SIKA SOLUTIONS

SINCE 1910 Sika has been a reliable partner in the construction projects in almost every part of the world and has gained an enviable reputation for quality products and system solutions backed up by unrivalled technical expertise and support.

Sika provides a single source for integrated and fully compatible solutions for new construction and repairs of manufacturing facilities from basement to roof.

CONTENT



05 Sika Solutions for Basement Waterproofing

06 Sika Solutions for Joint Waterproofing

07 Sika Solutions for Waterproof Structures

08 Sika Solutions for Concrete Construction

10 Sika Solutions for Concrete Repair

11 Sika Solutions for Concrete Bonding

12 Sika Solutions for Grouting

13 Sika Solutions for Tiles Fixing

14 Sika Solutions for Roof Waterproofing

15 Sika Solutions for Floor Hardeners

16 Sika Solutions for Floor Protection

18 Sika Solutions for Water Storage Tank

19 Sika Solutions for Effluent Treatment Plant

SIKA - THE GLOBAL TECHNOLOGY AND MARKET LEADER IN SPECIALITY CHEMICALS

SIKA - A COMPANY WITH MORE THAN 100 YEARS OF HISTORY.

The history of Sika began in 1910 and rapidly expanded from 1918 when the Gotthard rail tunnel was specified to be waterproofed with a Sika system.

Today Sika is the global technology and market leader in specialty chemicals for building and construction, providing products and complete system solutions in the following areas:



CONCRETE PRODUCTION



REFURBISHMENT



ROOFING



WATERPROOFING



FLOORING



SEALING AND BONDING

BASEMENT WATERPROOFING



SikaBit® W-15

Wet-applied, modified bitumen waterproofing membrane

USES

- Ideal for foundations, basement slabs, walls and podium slabs

ADVANTAGES

- Full surface bonding
- High puncture resistance
- Zero water underflow

AVAILABILITY

1 m x 20 m rolls

SikaBit® W-1

Wet-applied, one component bonding mortar

USES

- Bonding mortar for SikaBit® W-15 waterproofing membrane to prepare concrete surface

ADVANTAGES

- Very good bond to SikaBit® W-15
- 1-part system, requires only the addition of water
- Easy application by brush or roller

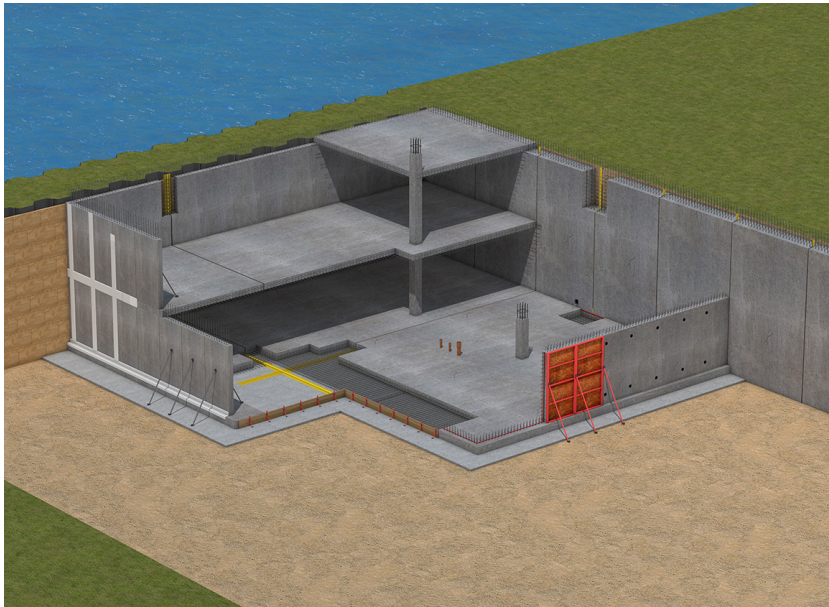
CONSUMPTION

1.8 kg/m²/mm (depending on substrate surface)

AVAILABILITY

25 kg bag

JOINT WATERPROOFING



SikaSwell® A profiles

Acrylic sealing profiles which swell in contact with water

USES

- Ideal for construction joints, pipe penetrations through walls

ADVANTAGES

- Resistant against water and various chemical substances
- Swells in contact with water & can swell into cracks and gaps

CONSUMPTION

10 m per roll

AVAILABILITY

6 x 10 m per box

Sikadur® Combiflex® SG system

High performance joint sealing system

USES

- Ideal for expansion joints, drinking water reservoirs, sewage treatment plants

ADVANTAGES

- High crack and joint bridging ability
- Sealing all types of joints and cracks
- High water tightness

CONSUMPTION

Sikadur®-31 C (adhesive): 0.7 to 1.4 kg/m length

AVAILABILITY

Sikadur-Combiflex® SG tape: 150 mm x 25 m roll

Sikadur®-31 C (adhesive): 12 kg system (A+B)

WATERPROOF STRUCTURES



Sikalastic®-450 (I)

Water based one part modified polyurethane / bituminous coating

USES

- Protective coating in infrastructure projects in civil engineering on non-trafficked areas
- Seamless , impervious coating on roofs

ADVANTAGES

- Resistant to mild acid and chemicals and industrial environment
- Crack-bridging and abrasion resistance
- Excellent adhesion to concrete, brickwork, asphalt, corrugated asbestos and asbestos cement

CONSUMPTION

1.25 kg/m²

AVAILABILITY

20 kg bucket

Igoflex® R

Flexible rubber / bitumen emulsion coating

USES

- Retaining walls
- Settlement tanks
- Earth covered roofs

ADVANTAGES

- Good resistance to soil acids and salts
- Bridges shrinkage and hair-line cracks
- Good weather resistance and ageing properties

CONSUMPTION

0.6 to 0.8 kg/m² per coat
2 to 3 coats required

AVAILABILITY

20 kg bucket

CONCRETE CONSTRUCTION



SikaPlast®-204 TH (BD) *(powered by ViscoCrete®)* High efficient superplasticizer with extended workability

USES

- Ideal for concrete basement, roof slab, beams, columns

ADVANTAGES

- High water reduction
- Extended workability in conjunction with subsequent strength development
- Less sensitive against variations in aggregates and / different cement types
- Superior plasticizing effect, resulting in improved flow, placing and compaction

CONSUMPTION

0.2 to 2.0 % by weight of cement.

AVAILABILITY

230 L in HDPE drum

SikaPlast® 2034 NS BD High performance superplasticizer

USES

- Ideal for concrete basement, roof slab, beams, columns

ADVANTAGES

- High water reduction
- Less sensitive against variations in aggregates and / different cement types
- Extended workability in conjunction with subsequent strength development
- Superior plasticizing effect, resulting in improved flow, placing and compaction

CONSUMPTION

0.2 to 2.0 % by weight of cement

AVAILABILITY

230 L in HDPE drum



Sika Separol® / Sika Separol®-LP

Chemical release agent

USES

- As a shutter release agent for a clean and smooth concrete surface
- As a form release agent for steel, plastic and wooden formwork

ADVANTAGES

- Easy to apply by spray and roller
- No staining
- Ensures fair faced concrete finish
- Does not impair adhesion of subsequent renderings & coatings

CONSUMPTION

36 to 40 m²/L

AVAILABILITY

200 L drum

Sika® Antisol® A4

Water dispersed, acrylic co-polymer based concrete curing compound

USES

- Sika® Antisol® A4 is sprayed on to newly laid concrete surfaces to form a thin film barrier against premature water loss, without disturbing the normal setting action.

ADVANTAGES

- Reduces incidence of plastic cracking
- Reduces shrinkage
- Reduces surface dusting
- Eliminates expensive methods of curing such as hessian-watering etc.

CONSUMPTION

5 to 6 m²/L

AVAILABILITY

200 L drum

CONCRETE REPAIR



Sika® MonoTop®-122 F

Fiber based one component repair mortar

USES

- Repair of spalling and damaged concrete in buildings, bridges, infrastructure and superstructure works
- Structural and cosmetic repairs

ADVANTAGES

- Easy to use (only to be mixed with water)
- Can be applied up to 40 mm thick in vertical layers
- Good adhesion
- Suitable for hand and machine application

CONSUMPTION

2100 to 2200 kg/m³

AVAILABILITY

30 kg bag

Sika® MonoTop®-711 MY

High performance, one part, cementitious polymer modified finish skim coat

USES

- Level uneven substrates such as concrete, aerated concrete, hollow block, walls, light-weight blocks etc.
- Filling compound for level off irregularities and fill blow holes and fine honeycomb
- Suitable for both internal and external use

ADVANTAGES

- Provide very fine surface finish on walls, ceilings etc.
- Quick drying and easy to apply
- Non-cracking when applied at correct thickness and properly cured
- Good adhesion

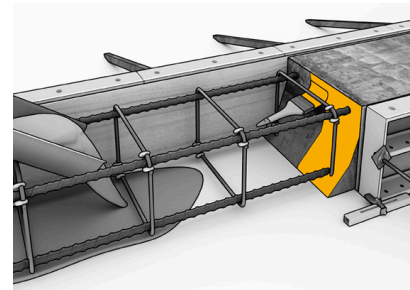
CONSUMPTION

The consumption will vary depending on substrate condition.

AVAILABILITY

25 kg bag

CONCRETE BONDING



Sika® Latex Power

Multi purpose polymer for repair

USES

- Bonding agent for uses in repair and plastering
- Treatment for leaching and salt petre action

ADVANTAGES

- Mortar using Sika® Latex Power shows extremely good bonding to bases like concrete, stone, brick

CONSUMPTION

5 kg Sika® Latex Power per 50 kg bag of cement

AVAILABILITY

1 kg, 5 kg, 10 kg, 20 kg in HDPE container

Sikadur®-32 LP

Epoxy resin bonding agent for old to new concrete

USES

- As a bonding agent applied between old and new concrete surfaces during casting of roof slabs, retaining walls, water tanks, columns, extension of balconies etc.
- Suitable for mortar, steel and iron
- Highly effective even on damp surface

ADVANTAGES

- Long pot life and open time allows sufficient time for placement of new concrete
- Suitable for application on moist surface
- High tensile strength

CONSUMPTION

0.2 to 0.5 kg/m²

AVAILABILITY

6 kg, 30 kg pre-packed (A+B)

GROUTING



SikaGrout®-214

High precision, dual-shrinkage compensated cementitious grout for static load distribution

USES

- To grout bearings, machine foundations, column joints in precast construction etc.
- To grout cavities, gaps and voids in concrete
- To grout anchors in concrete

ADVANTAGES

- Shrinkage compensated
- Very good flow characteristics
- Easy to mix, only add water
- Rapid strength development

CONSUMPTION

2300 kg/m³

AVAILABILITY

30 kg bag

SikaRep® MicroCrete-4

Ready to use non-shrink, cementitious micro concrete

USES

- Repair of damaged concrete structures e.g. columns, beams, slabs etc.
- Grouting of large gaps

ADVANTAGES

- Shrinkage compensated
- Very good flow characteristics
- Easy to mix, only add water
- Rapid strength development
- Good bond with old concrete

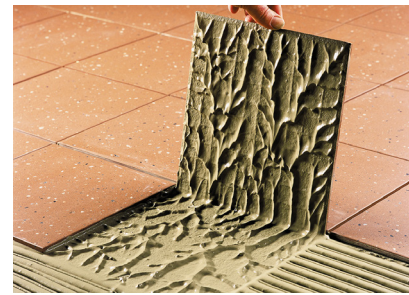
CONSUMPTION

2300 kg/m³

AVAILABILITY

30 kg bag

TILES FIXING



SikaCeram®-212

Cement-based high performance adhesive with no vertical slip for fixing ceramic and vitrified tiles

USES

- Ideal for laying all kinds of ceramic and vitrified tiles
- Indoor on walls and floors
- Indoor over-tiling applications on old tiles, without primer

ADVANTAGES

- No vertical slipping
- Application up to 10 mm thick
- Tested and approved for C2 T classification per EN 12004

CONSUMPTION

1.2 kg/m²/mm of thickness

AVAILABILITY

25 kg bag

SikaCeram®-255

Cement-based high performance adhesive with no vertical slip and extended open time for fixing vitrified tiles, glass mosaics and natural stones

USES

- Ideal for indoor and outdoor, on walls and floors
- Suitable for high performance applications, such as swimming pools, industrial and heavy trafficked floors

ADVANTAGES

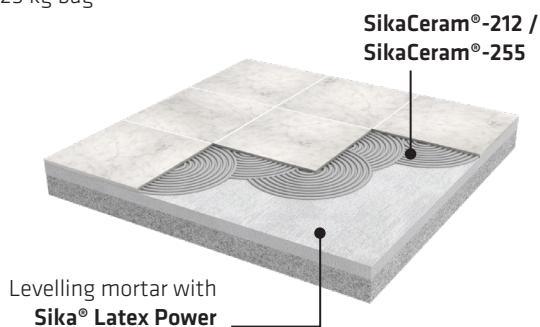
- No vertical slipping
- Extended open time
- Application up to 10 mm thick
- Tested and approved for C2 TE classification per EN 12004

CONSUMPTION

1.2 kg/m²/mm of thickness

AVAILABILITY

25 kg bag



ROOF WATERPROOFING



SikaTop® Seal-109 hi

Two pack acrylic polymer modified cementitious waterproofing coating system

USES

- Ideal for water retaining structures
- As a seamless coating for concealed roof waterproofing

ADVANTAGES

- Good impermeability against water ingress
- Highly water resistant, arrest salt petre and prevent carbonation

CONSUMPTION

2.2 kg/m² area

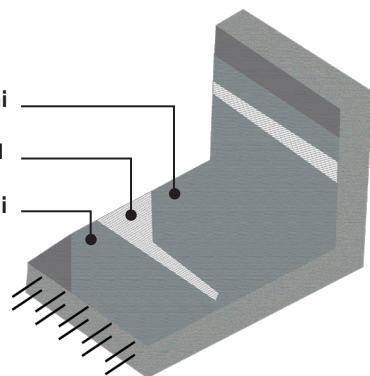
AVAILABILITY

25 kg system (A+B)

SikaTop® Seal-109 hi

Sika® Fab-1

SikaTop® Seal-109 hi



Sika® CoolCoat

Single component, microfiber reinforced, waterproofing and heat reflecting cum temperature reducing coating system

USES

- Ideal for roof slabs (flat and sloped)
- RCC / asbestos / lime terraced roofs
- Suitable for repairing existing bituminous membrane

ADVANTAGES

- Cross linking polymer gives excellent weather resistance and enhances service life
- High solar reflectance index (SRI) indicates high degree of cooling effect
- High resistance to chloride penetration, hence highly suitable for saline environment
- Algae and fungi resistant

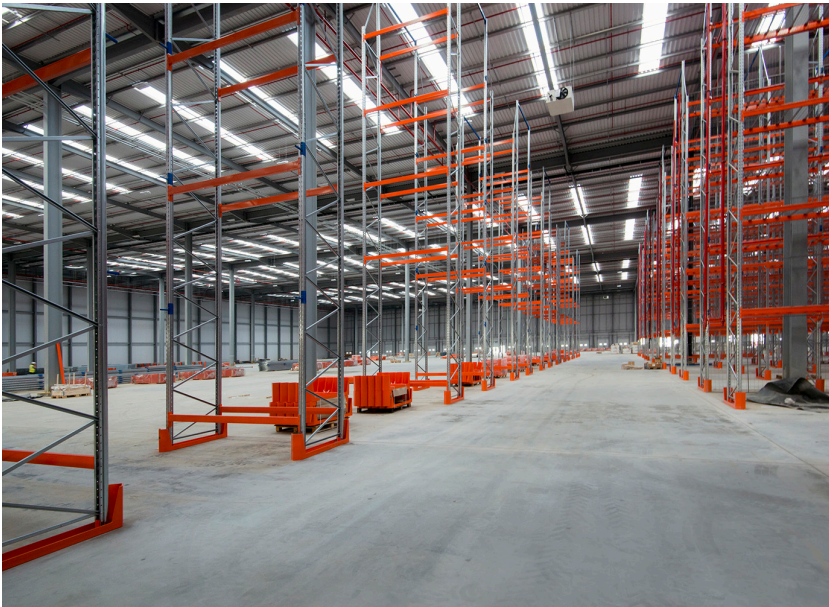
CONSUMPTION

1.5 kg/m² area

AVAILABILITY

10 kg pack

FLOOR HARDENERS



Sika® Chapdur

Non-metallic mineral dry shake floor hardener

USES

- Ideal for warehouses, factories, shopping malls, public areas etc.

ADVANTAGES

- Good wear resistance rating
- Impact resistance
- Increased resistance to oils and grease
- Dust proof

CONSUMPTION

5 to 6 kg/m² area

AVAILABILITY

30 kg bag

Sikafloor® CureHard-24

Transparent surface hardener, dust proofer, sealing and curing compound for concrete

USES

- Horizontal old or new concrete surfaces, where a hard surface with light to moderate abrasion resistance is required e.g. warehouses, industrial plants, stores, parking structures, service stations, hangars etc.
- Suitable for interior or exterior applications

ADVANTAGES

- Improved chemical and abrasion resistance compared to untreated concrete
- Reduced dusting of concrete floors
- Improves clean ability
- Non-yellowing
- Good penetration

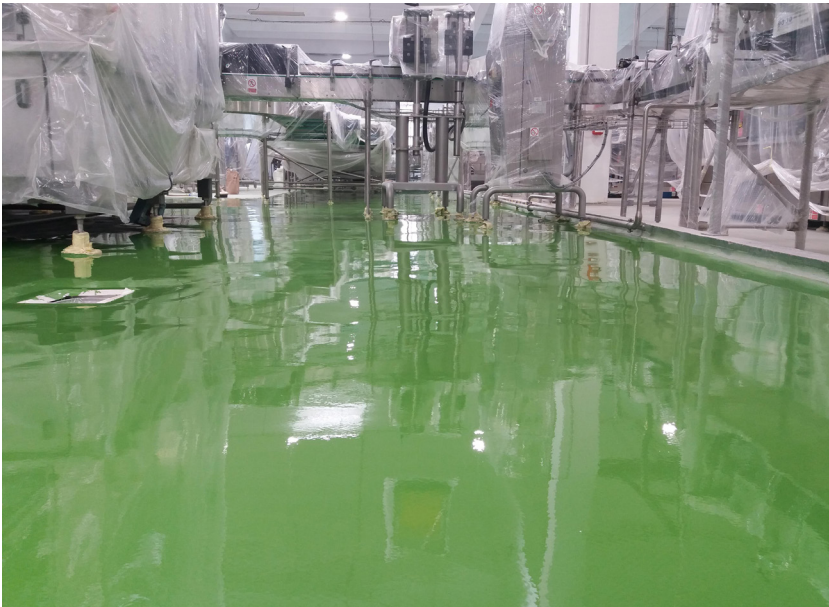
CONSUMPTION

0.25 to 0.35 kg/m²/coat

AVAILABILITY

10 kg container

FLOOR PROTECTION



Sikafloor® -81 EpoCem®

Three part Epoxy-cement screed for protection against rising moisture

USES

- As a moisture barrier below epoxy flooring
- As a self-levelling screed below epoxy flooring

ADVANTAGES

- Protect epoxy floor against raising moisture
- Faster installation of epoxy flooring on new concrete
- Excellent early and final mechanical strengths

CONSUMPTION

4.5 kg/m² area

AVAILABILITY

65.6 kg system (A+B+C)

Sikafloor® Multidur ES system

Self smoothing flooring system with high mechanical resistance

USES

- Self-smoothing topping & roller coat for concrete and cement screeds with normal up to medium heavy wear e.g. production areas, storage and assembly halls, maintenance workshops, garages and loading ramps
- Seal coat for broadcast systems such as multi-stories and underground car parks, maintenance hangars and for wet process areas e.g. beverage and food industry

ADVANTAGES

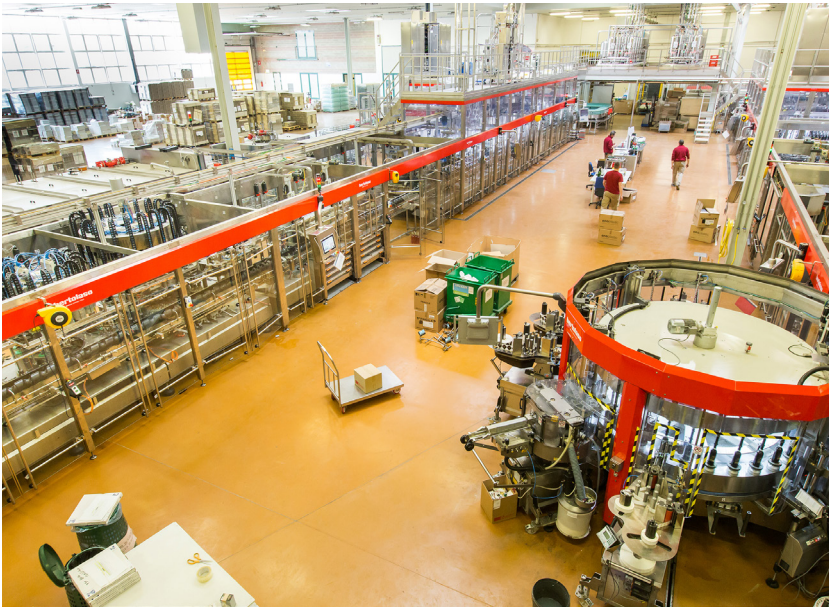
- Good chemical and mechanical resistance
- Good slip resistance is possible
- Available in wide range of RAL colors
- Easy clean ability

CONSUMPTION

0.35 to 2.20 kg/m²

AVAILABILITY

20 kg system



Sikafloor®-20 PurCem® LP

Heavy duty, high strength, easy trowel, polyurethane hybrid flooring screed, typically installed at 6 to 9 mm thick

USES

- Food processing plants
- Chemical plants
- Laboratories
- Workshops

ADVANTAGES

- Excellent chemical resistance
- High mechanical and slip resistance
- Can be applied to substrates with high moisture content
- Steam cleanable at 9 mm thick
- Joint less. Extra expansion joints are not necessary

CONSUMPTION

2.0 kg/m²/mm

AVAILABILITY

31 kg system (A+B+C)

Sikafloor®-21 PurCem® LP

Medium to heavy duty, self-smoothing, polyurethane hybrid flooring screed, typically installed at 3 to 6 mm thick

USES

- Food processing plants (wet or dry process areas, freezers and coolers)
- Chemical plants
- Laboratories
- Workshops

ADVANTAGES

- Good chemical resistance
- High mechanical and abrasion resistance
- Can be applied to substrates with high moisture content
- Joint less. Extra expansion joints are not necessary
- Perform and retain its physical characteristics through a wide temperature range from -5 °C up to +65 °C

CONSUMPTION

1.9 kg/m²/mm

AVAILABILITY

20 kg system (A+B+C)

WATER STORAGE TANK



SikaTop® Seal-107

Two part acrylic polymer modified cementitious liquid applied waterproofing coating system

USES

- Ideal for wet rooms, retaining walls, terraces and balconies
- Interior and exterior waterproofing of concrete, cementitious rendering, brickwork etc.

ADVANTAGES

- Protects concrete against water penetration
- Sealing static hairline cracks in concrete structures

CONSUMPTION

3 kg/m²

AVAILABILITY

25 kg system (A+B)

Sikagard®-720 EpoCem®

Three-part cement and epoxy combination micro mortar for surface sealing

USES

- As a moisture barrier over high moisture content substrates, even green concrete
- In the food industry, as a levelling and smoothing layer for walls, covings, water reservoirs prior to the application of a suitable Sika® epoxy or polyurethane finish
- As a levelling layer over concrete and mortars in 1-3 mm on vertical or horizontal surfaces, in new works or repairs, particularly in aggressive chemical environments

ADVANTAGES

- Excellent protection of concrete in aggressive environments
- Impervious to liquids but permeable to water vapor
- Minimum waiting time prior to the application of other Sika® resin based finish products

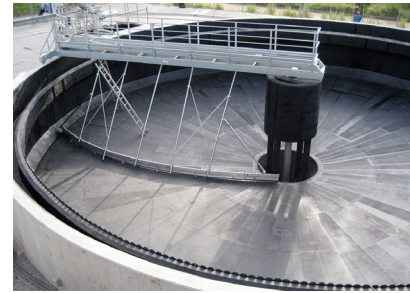
CONSUMPTION

4 kg/m²

AVAILABILITY

18.5 kg system (A+B)

EFFLEUNT TREATMENT PLANT



Inertol Poxitar®

Heavy duty, coal tar based epoxy coating for steel and concrete

USES

- Internal and external coating for sewage tank
- Medium chemical ETP tank
- Submerged structures
- Steel protection of chemical industries

ADVANTAGES

- Abrasion and impact resistant
- Excellent resistance to mild acids, chemicals and oil contaminated water
- Resistant to microbes
- Tough hard and heavy duty coating system

CONSUMPTION

0.5 to 0.8 kg/m² (in two coats)

AVAILABILITY

10 kg system (A+B)

Sikagard®-63

Solvent free, high build thixotropic epoxy resin based protective coating with high chemical resistance

USES

- Abrasion resistant universal coating system for normal to highly aggressive chemical environments
- Anti-corrosive coating for chemical plants, storage tanks, silos and ETP
- Chemical resistant glass laminate for aggressive chemical storage tanks and process areas

ADVANTAGES

- Acid and chemical resistance
- High mechanical and abrasion resistance
- Easy application process

CONSUMPTION

0.5 to 0.7 kg/m² on Sikagard®-720 EpoCem®
1.0 to 1.2 kg/m² with Sika® Fab-1

AVAILABILITY

4 kg system (A+B)

SIKA FULL RANGE SOLUTIONS FOR CONSTRUCTION:



WATERPROOFING



CONCRETE



REFURBISHMENT



SEALING AND BONDING



FLOORING



ROOFING

WE ARE SIKA

Sika is a globally active specialty chemicals company. Sika supplies the building and construction industry as well as manufacturing industries (automotive, bus, truck, rail, solar and wind power plants, façades). Sika is a leader in processing materials used in sealing, bonding, damping, reinforcing and protecting loadbearing structures. Sika's product lines feature high quality concrete admixtures, specialty mortars, sealants and adhesives, damping and reinforcing materials, structural strengthening systems, industrial flooring as well as roofing and waterproofing systems.

Our most current General Sales Conditions shall apply. Please consult the most current local Product Data Sheet prior to any use.

SIKA BANGLADESH LIMITED
Skylark MAK 84, 8th floor
House No. 84, Block D, Road No. 11
Banani, Dhaka-1213, Bangladesh

CONTACT
Phone: +88 01313095060
+88 01313095061
www.sika.com

BUILDING TRUST

